

EastBanc

3306 M STREET - 4,700 SF



4,700 SF OF
OPEN MODERN
RETAIL SPACE WITH
EXPOSURE TO M
STREET AND CADY'S
ALLEY, BENEFITTING
FROM EXPANDED
CO-TENANCY ON
EITHER ENTRANCE.

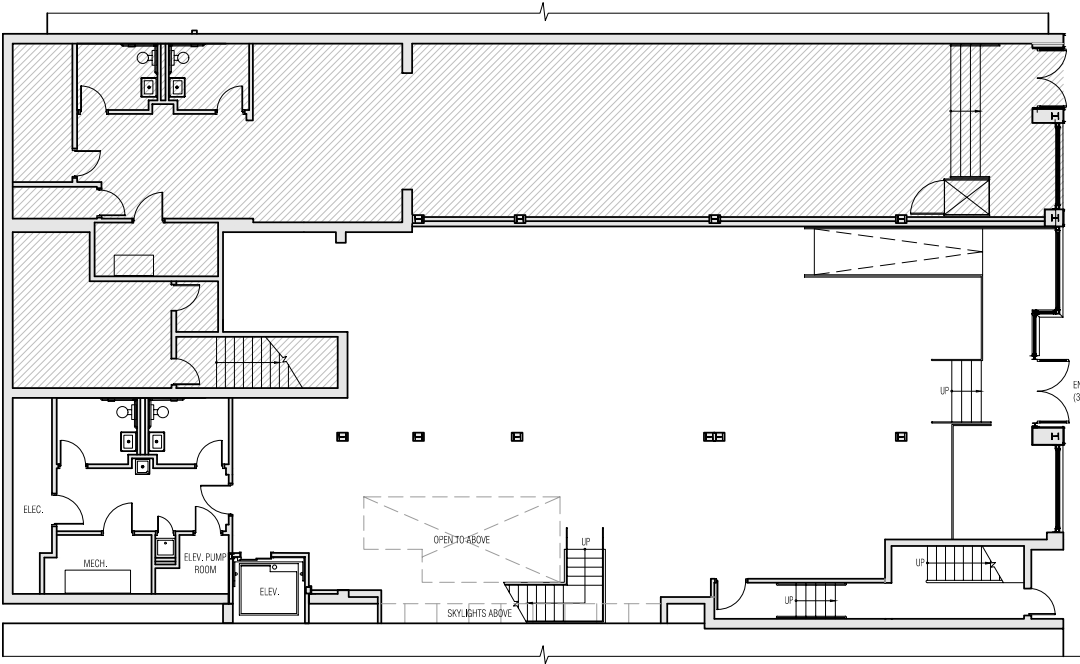
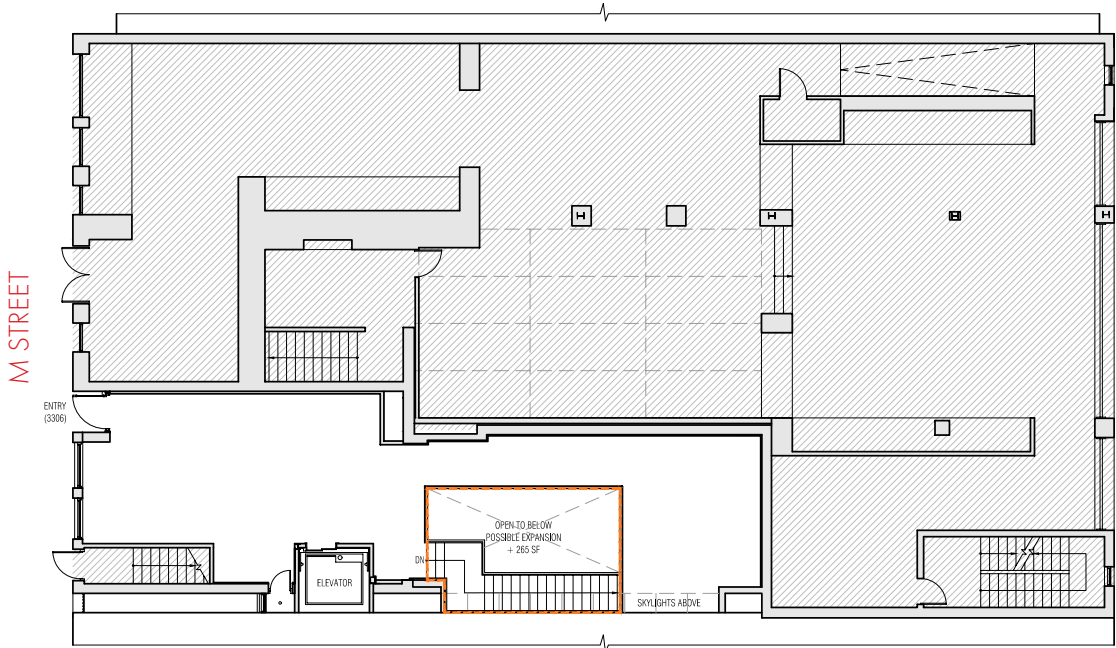
SOMETHING TO BE
Wild ABOUT



WIDE OPEN **3,500 SF** FLOORPLAN ALLOWS FOR EXPANDED MERCHANDISING OPENING TO CADY'S ALLEY WHILE RETAINING EXPOSURE AND SIGNAGE ON **M STREET** THROUGH THE PRIMARY ENTRANCE.



GROUND FLOOR - 1,200 SF



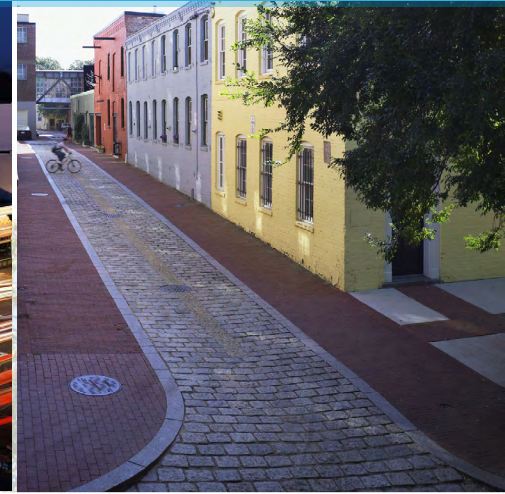
ALLEY LEVEL - 3,500 SF



NEIGHBORING TENANTS

BLUE = MANAGED BY EASTBANK

RED = AVAILABLE



\$126,000+

AVERAGE
HOUSEHOLD
INCOME

320,461

POPULATION

850+

HOTEL
ROOMS

70

HOME DÉCOR
RETAILS AND DESIGN
SHOWROOMS

97

NEIGHBORHOOD
WALKSCORE

50+

ETHNICITIES

EastBanc



BARRY GREENBERG
(202) 944-2142
bgreenberg@eastbanc.com

3307 M St NW #400
Washington, DC 20007
eastbanc.com

SABRINA JAWER
(202) 944-1626
sjawer@eastbanc.com