

WIDE FRONTAGE,  
**16 FT** WINDOWS  
LOOKING OUT  
ONTO ICONIC  
**M STREET**  
WITH PRIME  
CO-TENANCY.



SOMETHING TO BE  
**Wild** ABOUT

# 3210 M STREET

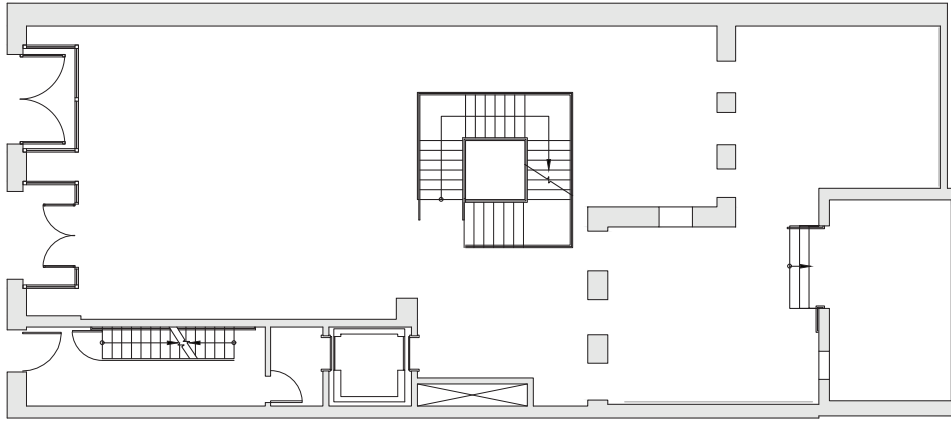


SPACIOUS, **3200 SF** GROUND FLOOR FLOODED WITH NATURAL LIGHT.

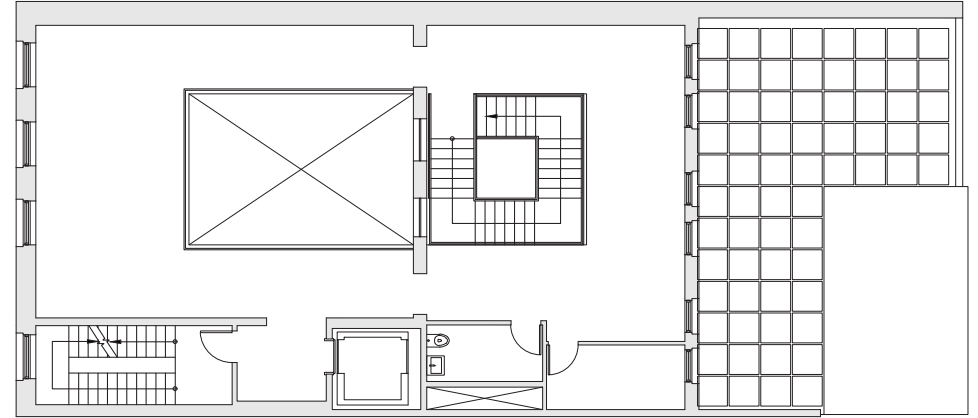


# SITE DETAILS

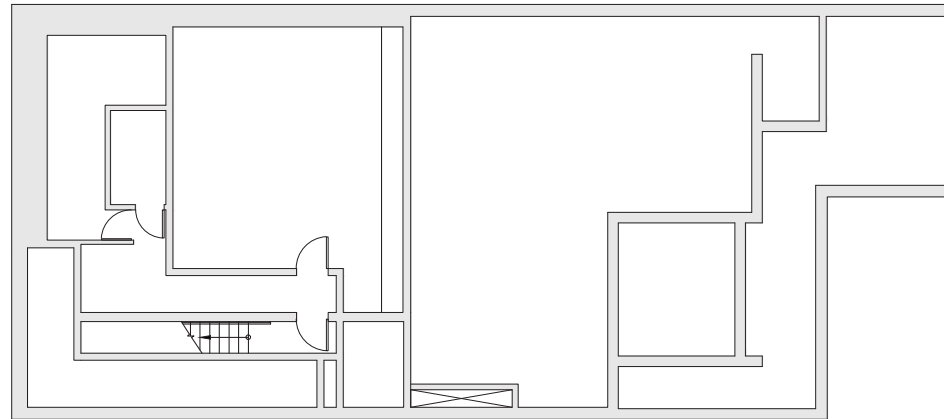
M Street Entrance



**GROUND FLOOR - 3200 SF**



**SECOND FLOOR - 1700 SF**



**BASEMENT - 600 SF**

**4,900 SQUARE FEET** OF RETAIL SPACE WITH ADDITIONAL **600 SQUARE FEET** OF BASEMENT STORAGE.

# GEORGETOWN RETAIL MAP

## NEIGHBORING TENANTS



BLUE = MANAGED BY EASTBANK    RED = AVAILABLE



COS

Barbour

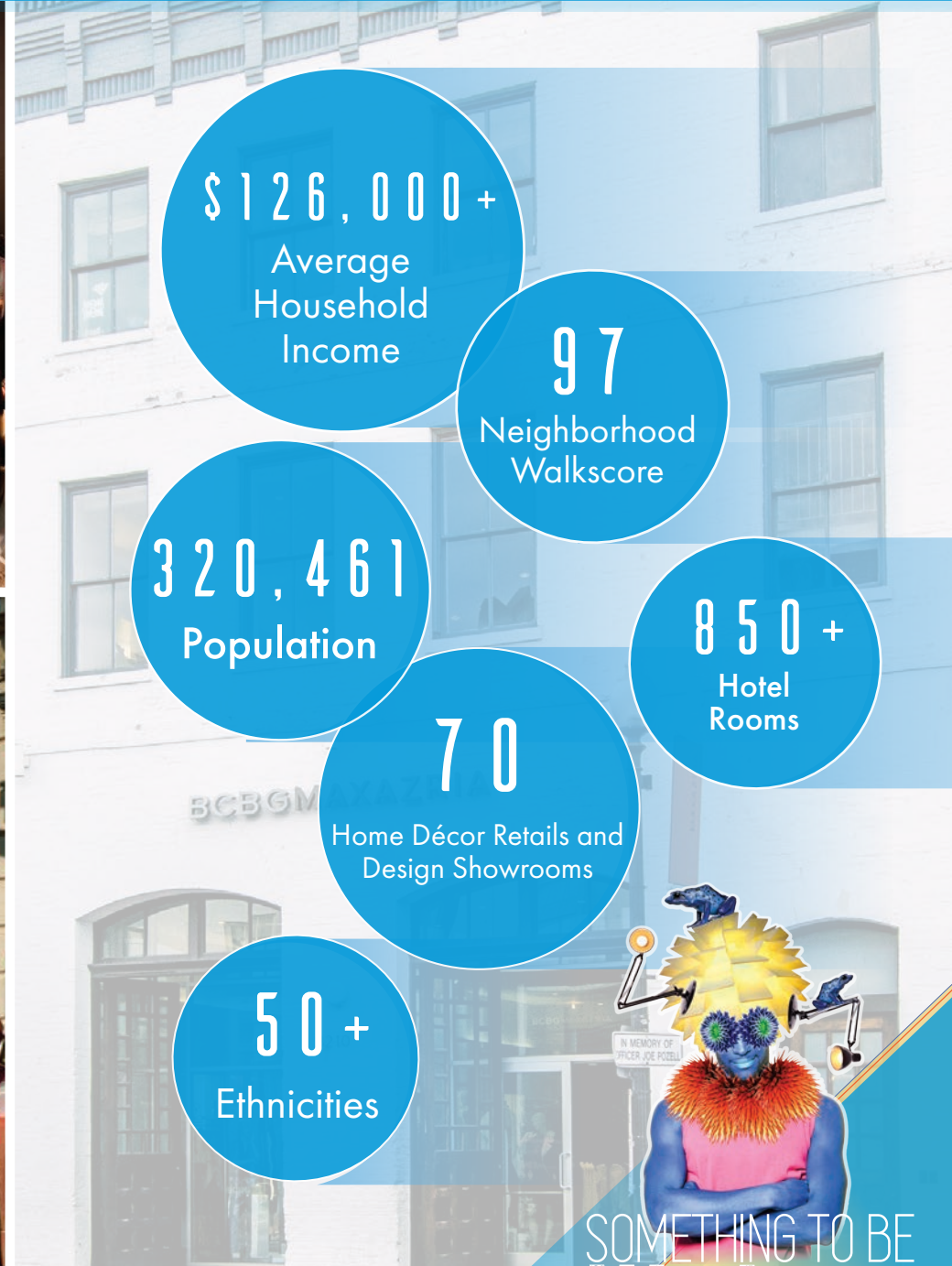
TORY BURCH

ANTHROPOLOGIE

lululemon athletica



# GEORGETOWN



\$126,000+  
Average Household Income

97  
Neighborhood Walkscore

320,461  
Population

850+  
Hotel Rooms

70  
Home Décor Retailers and Design Showrooms

50+  
Ethnicities



SOMETHING TO BE  
**Wild** ABOUT

**EastBanc**

**ACADIA**  
REALTY TRUST



**BARRY GREENBERG**  
(202) 944-2142  
bgreenberg@eastbanc.com

**3307 M St NW #400**  
Washington, DC 20007  
eastbanc.com

**SABRINA JAWER**  
(202) 944-1626  
sjawer@eastbanc.com